

DoorScope Viewer

Explorer with demo repository:

Name	Version	Status	Status Date	Import Date	Doc. ID
[-] Sports utility vehicle 4x2					
[-] Change Proposal System					
[-] Design					
[-] Implementation					
[-] Project Plans					
[-] Requirements					
[-] Functional Requirements	0.0	Current	12.06.2003	19.02.2009 23:41:57	00000047
[-] Use Cases					
[-] User Requirements	2.1 (1998)	Current	12.06.2003	19.02.2009 23:41:54	00000048
[-] Test and Verification					

Viewer with demo document:

Functional Requirements [0.0 Current 12.06.2003] - DoorScope

Table of Contents

- 1 Introduction
- 2 Functional Requirements
 - 2.1 Power car
 - 2.1.1 Move car
 - 2.1.1.1 Move forwards
 - 2.1.1.2 Move backw...
 - 2.1.2 Accelerate car
 - 2.1.2.1 Switch on car
 - 2.1.2.2 Control speed
 - 2.1.2.3 Brake car
 - 2.1.2.4 Control direction
 - 2.1.2.4.1 Straight line

Change History

- winds of 0 kilometers per hour, with 180 BHP.
- Old Id: 12.02.1997 ... 1004
- Suspect: 27.12.199... (Default Value)
- Create Object: 12...
- Move Object: 23.0...

The car will have a world wide market.

2 Functional Requirements

2.1 Power car

2.1.1 Move car

2.1.1.1 Move forwards

The car shall be able to move forwards at all speeds from 0 to 200 kilometers per hour on standard flat roads with winds of 0

Annotations

- Object Text: [1] 31.03.2012 12:5...
 - This is an annotation

Links

- [Flows to] User Requ...
- The car shall be able to move backwards to a maximum speed of 20 Kilometers per hour.
- [Flows to] User Requ...

Attributes

- Absolute Number:** 5
- Cost:** 10
- Created By:** Paul Raymond
- Created On:** 11.02.1997
- Created Thru:** Manual In...
- Last Modified By:** Paul R...
- Last Modified On:** 11.02....
- OLE:** False
- OLEIconic:** False
- Object Number:** 2.1.1.1....
- Old Id:** 1004
- Picture:** False
- PictureNum:** 0
- Suspect:** False

Tables, bold, underline:

4.1 Capability Requirements

4.1.1 Carrying Capacity

4.1.1.1 Number of People

Four average size adults shall be able to travel in comfort for a period of 3 hours. This level of comfort is defined as being equivalent to the standard of comfort provided by the top 40% of cars produced in 1999.

The top level of cars are those in the price range \$20,000 to \$40,000 at 1999 prices.

Five average size adults shall be able to travel in comfort for a period of 3 hours.....

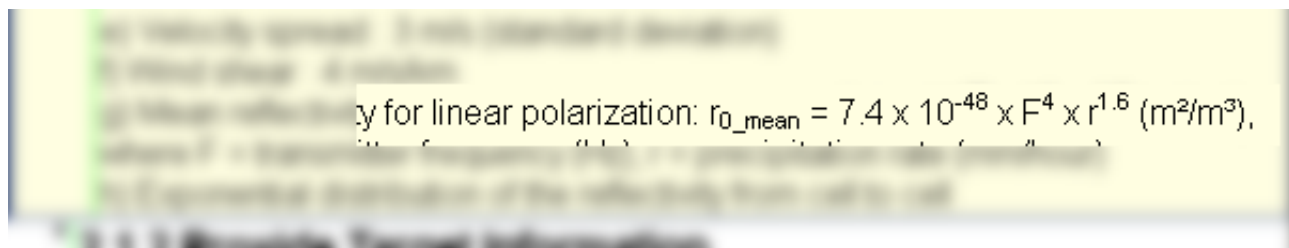
Users shall have easy entry and exit.

Size	Height (m)	Weight (kg)
Small	1.3 to 1.5	35 to 60
Medium	1.5 to 1.8	60 to 95
Large	1.8 to 2.0	95 to 120

Two average size adults and 3 average size children shall be able to travel in comfort for a period of 3 hours.

Users shall be able to have maximum safety protection against any malfunction of

Super and subscript:

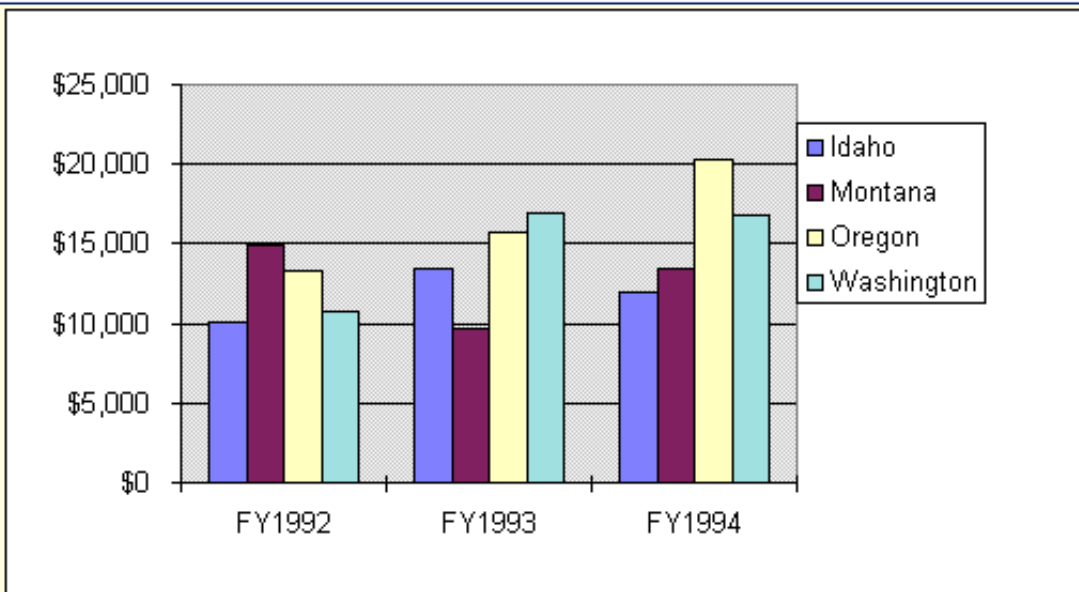


Images:

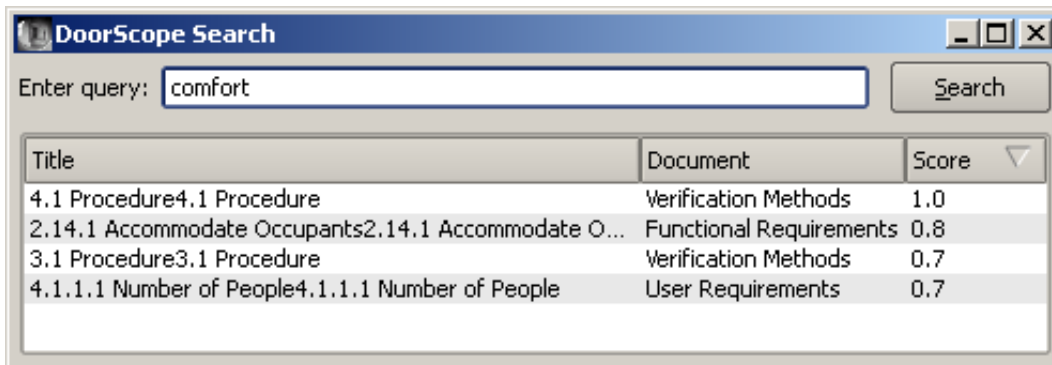
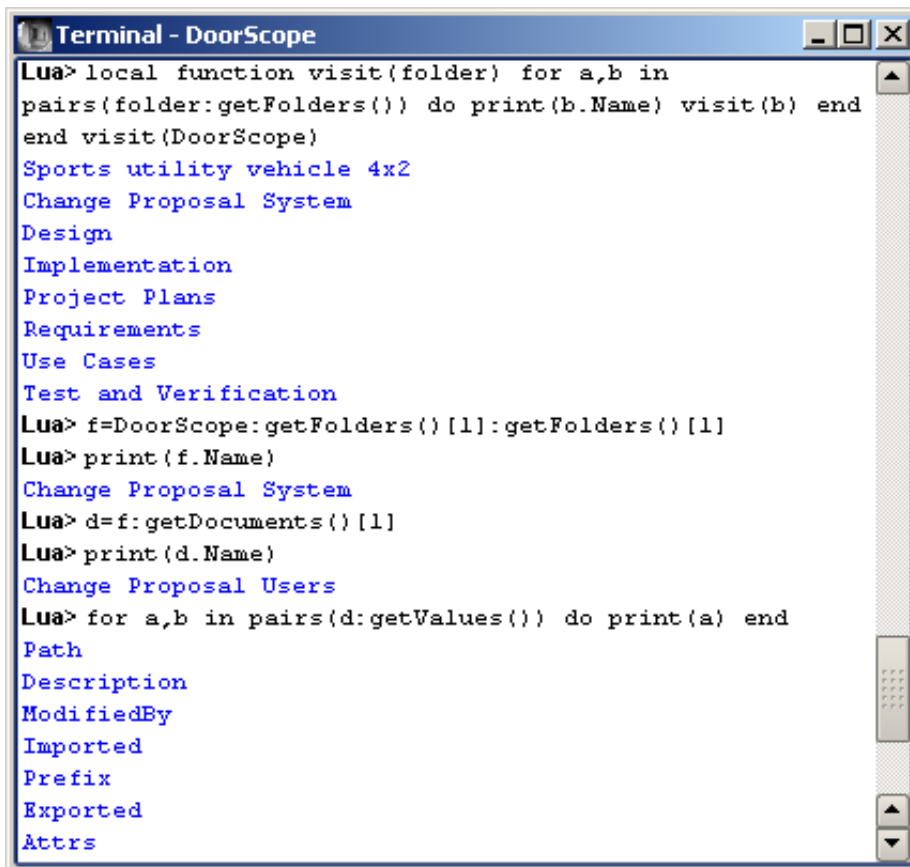
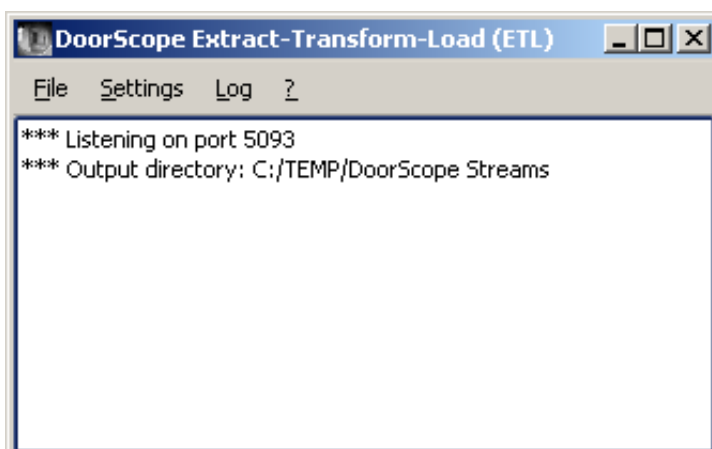
Project Structure

TBD

7 Costs



Expected further costs.

Fulltext Search:**Scripting:****DoorScope Extractor**

- screenshots.txt · Last modified: 2012-05-07 20:38 by admin